

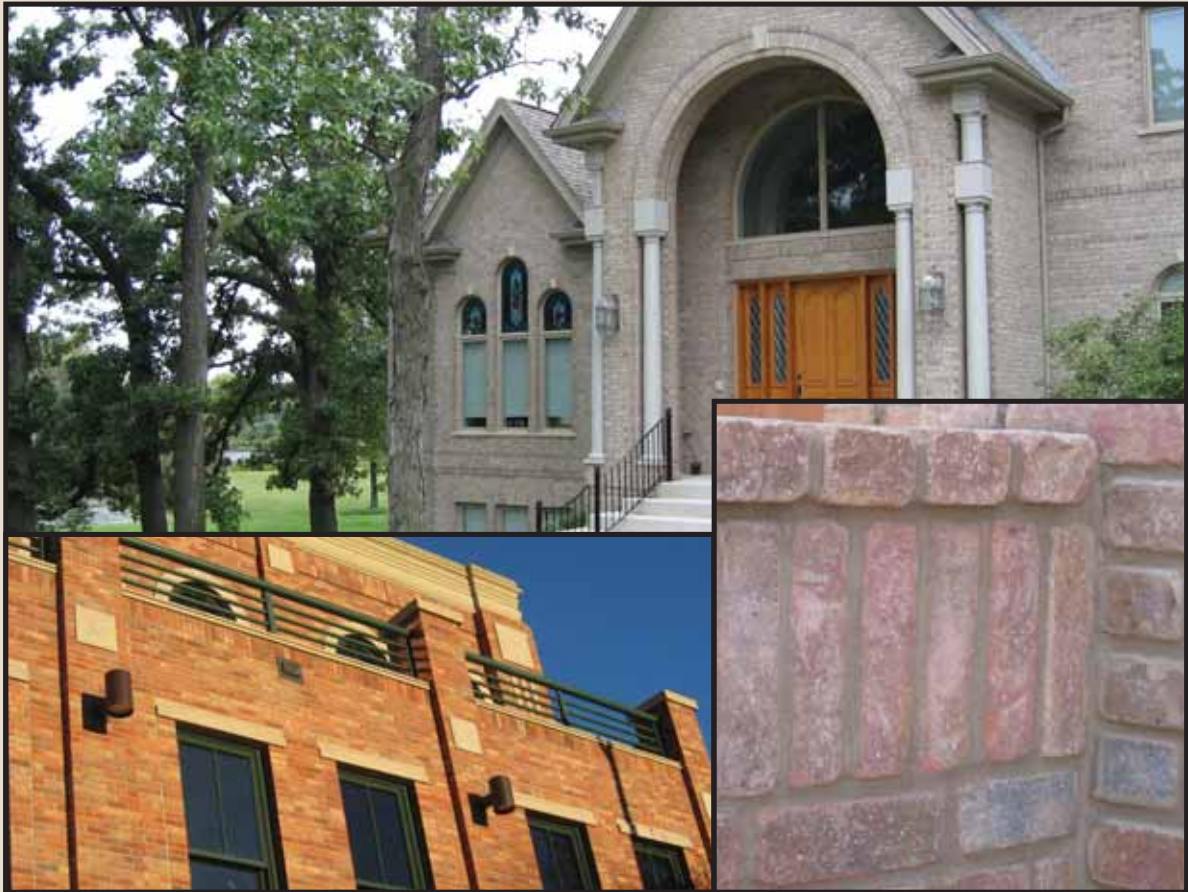
ROBINSON BRICK™

QUALITY FBX BRICK BY ROBINSON BRICK COMPANY

Superior Quality Brick for Lasting Value.



For 125 years, Robinson Brick Company has manufactured the most beautiful collection of brick colors and textures in the world. Choosing Robinson Brick™ means that you demand lasting value, exceptional quality and unique choices. Our FBX brick is manufactured in Colorado from the finest clays available, and under the strict guidelines of ISO 9001. When you are looking for the highest quality brick, the greatest value, and the most beautiful selection of colors, choose Robinson Brick.



Manufactured Under an NSAI Registered
U.S. EN ISO 9001 Quality System

RobinsonBrick.com

ROBINSON
BRICK
COMPANY

SINCE 1880

ROBINSON BRICK™

QUALITY FBX BRICK BY ROBINSON BRICK COMPANY

ASTM and FBX

How do you know when you are getting the best quality brick? Check the standard to which the brick is manufactured. Robinson Brick Company's standards exceed ASTM C216, which is the standard specification for facing brick. But we go further than that. All of our brick is produced to Grade SW (Severe Weather), which guarantees a stronger, more durable brick that lasts longer and requires less maintenance than its lower grade counterpart, Grade MW (Moderate Weather). Robinson Brick Company also produces only type FBX brick, which maintains strict requirements on waste, chips, cracks and warpage.

ASTM C216

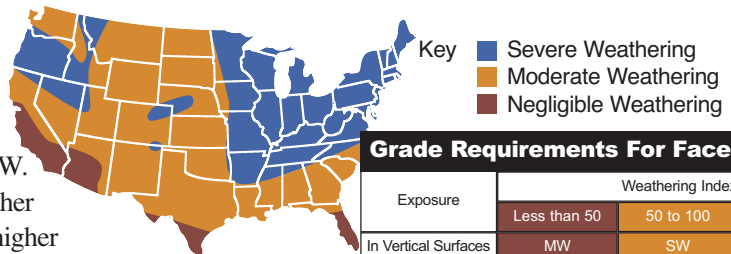
The American Society for Testing and Materials (ASTM) is the world's leader in the development of voluntary consensus standards for material, products, systems, and services. ASTM C216 is the standard specification for Facing Brick.

Grades of ASTM C216

There are two grades for this standard specification: Severe Weather (SW) and Moderate Weather (MW). The Weathering Index by which these grades are defined is based on the product of the average annual number of freezing cycle days and the average winter rainfall in inches. Robinson Brick Company produces Grade SW Brick.

The Grade SW Advantage

Because Grade SW brick are stronger and more durable, they last longer and require less maintenance than Grade MW. In addition, Grade SW has greater weather resistance, lower absorption rates, and higher compressive strength than lower grade brick.



Grade Requirements For Face Exposure

Exposure	Weathering Index		
	Less than 50	50 to 100	100 and Greater
In Vertical Surfaces	MW	SW	SW
Weathering Regions	Negligible	Moderate	Severe

FBX Advantage

Robinson Brick Company produces brick that is above and beyond standard FBX brick to enhance the appearance and quality of finished walls. Type FBX can save on construction costs since minimal waste, chips, cracks, and warpage is allowed. Clearly, FBX is superior to its counterpart, FBS.

FBX Brick Allows	<Considerations>	FBS Brick Allows
Up to 10% - including excess chippage	Waste	Up to 20% - including excess chippage
1/8" (3.2mm) edge, 1/4" (6.4mm) corner	Chips	5/16" (7.9mm) edge, 1/2" (12.7mm) corner
None seen from 15 feet (4.6m) away	Cracks	None seen from 20 feet (6.1m) away
5/16" (7.9mm) from each other	Length Variation	1/2" (12.7mm) from each other
1/16" (1.6mm) for under 8" (203mm) dimension	Warpage	3/32" (2.4mm) for under 8" (203mm) dimension

New Traditions™

Robinson Brick Company's New Traditions™ line of tumbled brick products looks as if it has been around for hundreds of years, exhibiting rustic surface characteristics. Available in a

large selection of colors, this brick provides a traditional look with old-fashioned appeal.

Color Name	Body Color	Texture	Coating	Overall Tone	Absorption 24 hr cold (%)	Absorption 5 hr boil (%)	Saturation Coefficient	Initial Rate (g/min/30in ²)	Compressive Strength (KPSI)
Cambridge™	Red/Orange	Tumble	Clay Slip	Dark	5.0 to 7.0	8.0 to 9.5	.65 to .78	14.0 to 26.0	8.0 to 10.5
Chesapeake™	Tan/Earth Tones	Tumble	Clay Slip	Light	5.5 to 7.5	8.0 to 10.0	.65 to .78	16.0 to 28.0	7.0 to 9.5
Confetti™	Red/Buff	Tumble	Clay Slip	Light	5.5 to 7.5	8.0 to 10.0	.65 to .78	16.0 to 28.0	7.5 to 10.0
Culpeper™	Red	Tumble	Clay Slip	Dark	5.0 to 7.0	8.0 to 9.5	.65 to .78	20.0 to 26.0	8.0 to 10.5
Dartmouth™	Red	Tumble	Clay Slip	Dark	5.0 to 7.0	8.0 to 9.5	.65 to .78	12.0 to 24.0	8.0 to 10.5
Fossilbed™	Grey/Buff	Tumble	Clay Slip	Light	5.5 to 7.5	8.0 to 10.0	.65 to .78	16.0 to 28.0	8.0 to 10.5
Greymohr™	Grey/Buff	Tumble	Clay Slip	Light	5.5 to 7.5	8.0 to 10.0	.65 to .78	16.0 to 28.0	7.0 to 9.5
Mesquite™	Red	Tumble	Clay Slip	Dark	5.0 to 7.0	7.5 to 9.5	.65 to .78	16.0 to 28.0	8.0 to 10.5
Old Charleston™	Tan/Buff	Tumble	Clay Slip	Light	6.0 to 8.0	8.5 to 11.0	.65 to .78	16.0 to 36.0	6.2 to 9.2
Old Chicagocommon™	Tan/Buff	Tumble	Powder	Light	6.0 to 8.0	8.5 to 11.0	.65 to .78	20.0 to 40.0	6.2 to 9.2
Old Chestnut™	Orange	Tumble	None	Dark	5.0 to 7.0	7.5 to 9.5	.65 to .78	16.0 to 28.0	6.5 to 8.5
Old Delaware™	Orange	Tumble	Clay Slip	Dark	5.5 to 7.5	8.5 to 10.5	.65 to .78	16.0 to 28.0	7.0 to 9.0
Old Georgetown™	Red	Tumble	Clay Slip	Dark	5.0 to 7.0	7.5 to 9.0	.65 to .78	16.0 to 28.0	8.0 to 10.0
Old Stoneybrook™	Red	Tumble	Clay Slip	Dark	5.0 to 7.0	7.5 to 9.5	.65 to .78	16.0 to 28.0	7.5 to 10.0
Old Tularosa™	Red	Tumble	Clay Slip	Dark	5.0 to 7.0	7.5 to 9.5	.65 to .78	12.0 to 24.0	8.0 to 10.5
Portsmouth™	Red/Orange	Tumble	Clay Slip	Dark	5.0 to 7.0	7.5 to 9.5	.65 to .78	12.0 to 24.0	7.5 to 9.5
Saintcloud™	Grey/Buff	Tumble	Clay Slip	Light	5.5 to 8.0	8.0 to 11.0	.65 to .78	16.0 to 40.0	6.2 to 10.5
Santarosa™	Red/Buff	Tumble	Clay Slip	Dark	5.5 to 7.5	8.0 to 10.0	.65 to .78	16.0 to 28.0	7.5 to 10.0
Sonoma™	Red	Tumble	Clay Slip	Dark	5.0 to 7.0	7.5 to 9.5	.65 to .78	14.0 to 26.0	8.0 to 10.5
Wellshire™	Orange	Tumble	Clay Slip	Dark	5.5 to 7.5	8.0 to 10.0	.65 to .78	16.0 to 28.0	7.0 to 9.0
Waterbrook™	Dark Red	Tumble	Clay Slip	Dark	5.0 to 7.0	7.5 to 9.5	.65 to .78	16.0 to 28.0	8.0 to 10.5
Waterton™	Dark Red	Tumble	None	Dark	5.0 to 7.0	8.0 to 9.5	.65 to .78	16.0 to 28.0	8.0 to 10.5

Note: Due to the rustic surface characteristics of the New Traditions line of products, some chipping and flaking is possible.

Designer Classics™

Robinson Brick Company's Designer Classics™ line includes a wide array of colors with clean, straight edges, for a look that is crisp, sophisticated, and always stylish.

Color Name	Body Color	Texture	Coating	Surface Char.	Overall Tone	Absorption 24 hr cold (%)	Absorption 5 hr boil (%)	Saturation Coefficient	Initial Rate (g/min/30in ²)	Compressive Strength (KPSI)
Ballpark™	Red	Smooth	None	Smooth	Dark	5.0 to 7.0	8.0 to 9.5	.65 to .78	16.0 to 28.0	8.0 to 11.0
Barnwood™	Medium Grey	Reroll	None	Lt. Texture	Dark	5.0 to 7.0	7.5 to 9.5	.65 to .78	14.0 to 26.0	8.0 to 10.5
Birch™	Buff	Reroll	Clay Slip	Rustic	Light	6.0 to 8.0	8.5 to 11	.65 to .78	14.0 to 34.0	6.2 to 9.0
Brimstone™	Red	Reroll	Clay Slip	Rustic	Dark	5.0 to 7.0	7.5 to 9.5	.65 to .78	12.0 to 24.0	8.0 to 10.5
Carbondale™	Tan/Earth Tones	Reroll	Clay Slip	Rustic	Light	5.5 to 7.5	8.0 to 10.0	.65 to .78	16.0 to 28.0	7.5 to 10.0
Charleston™	Tan/Buff	Light Roller	Clay Slip	Rustic	Light	6.0 to 8.0	8.5 to 11	.65 to .78	16.0 to 36.0	6.2 to 9.0
Chicagocommon™	Tan/Buff	Smooth	Powder	Smooth	Light	5.5 to 7.5	8.0 to 10.0	.65 to .78	16.0 to 28.0	6.5 to 9.0
Chestnut™	Orange	Smooth	None	Smooth	Dark	5.0 to 7.0	7.5 to 9.5	.65 to .78	16.0 to 28.0	6.5 to 8.5
Danbury™	Red/Orange	Reroll	Clay Slip	Rustic	Dark	5.0 to 7.0	7.5 to 9.0	.65 to .78	12.0 to 24.0	8.5 to 10.5
Delaware™	Orange	Smooth	Clay Slip	Rustic	Dark	5.5 to 7.5	8.5 to 10.5	.65 to .78	16.0 to 28.0	7.0 to 9.0
Dover Grey™	Buff	Reroll	Clay Slip	Rustic	Light	5.5 to 7.5	8.0 to 10.0	.65 to .78	16.0 to 28.0	6.5 to 9.0
Georgetown™	Red/Orange	Light Roller	Clay Slip	Lt. Texture	Dark	5.0 to 7.0	7.5 to 9.0	.65 to .78	12.0 to 24.0	8.5 to 10.0
Heritage 441™	Red	Ripple	Clay Slip	Rustic	Dark	5.0 to 7.0	7.5 to 9.5	.65 to .78	16.0 to 28.0	7.5 to 9.5
Heritage Antique™	Red	Ripple	Clay Slip	Rustic	Dark	5.0 to 7.0	7.5 to 9.5	.65 to .78	16.0 to 28.0	7.5 to 10.0
Old Chicago™	Dark Red	Grain	Clay Slip	Lt. Texture	Dark	5.0 to 7.0	7.5 to 9.5	.65 to .78	16.0 to 28.0	7.5 to 10.0
Quicksilver™	Buff	Reroll	Clay Slip	Rustic	Light	5.5 to 7.5	8.0 to 10.0	.65 to .78	16.0 to 28.0	7.5 to 10.0
Scrubbrush™	Buff Tan	Reroll	None	Lt. Texture	Dark	5.5 to 7.5	8.0 to 10.0	.65 to .78	16.0 to 28.0	7.5 to 10.0
Stoneybrook™	Red	Reroll	Clay Slip	Rustic	Dark	5.0 to 7.0	7.5 to 9.5	.65 to .78	16.0 to 28.0	7.5 to 10.1
Thundercloud™	Grey	Reroll	Clay Slip	Rustic	Light	5.0 to 7.0	7.5 to 10.0	.65 to .78	14.0 to 34.0	6.2 to 9.0
Tularosa™	Red	Light Roller	Clay Slip	Rustic	Dark	5.0 to 7.0	7.5 to 9.5	.65 to .78	12.0 to 24.0	8.0 to 10.6
Waterlodge™	Dark Red	Light Roller	Clay Slip	Lt. Texture	Dark	5.0 to 7.0	8.0 to 9.5	.65 to .78	16.0 to 28.0	8.5 to 11.0

Architectural Classics™

Robinson Brick Company's Architectural Classics™ line represents the very best in architectural brick choices.

Color Name	Body Color	Texture	Coating	Surface Char.	Overall Tone	Absorption 24 hr cold (%)	Absorption 5 hr boil (%)	Saturation Coefficient	Initial Rate (g/min/30in ²)	Compressive Strength (KPSI)
Autumn Leaf Grain™	Dark Red	Grain	None	Lt. Texture	Dark	5.0 to 7.0	8.0 to 9.5	.65 to .78	16.0 to 28.0	8.5 to 11.0
Autumn Leaf Matt™	Dark Red	Matte	None	Rustic	Dark	5.0 to 7.0	8.0 to 9.5	.65 to .78	16.0 to 28.0	8.5 to 11.0
Autumn Leaf Satin™	Dark Red	Smooth	None	Smooth	Dark	5.0 to 7.0	8.0 to 9.5	.65 to .78	16.0 to 28.0	8.5 to 11.0
Betawest™	Orange/Tan	Re-roll	Clay Slip	Rustic	Dark	6.0 to 8.0	8.5 to 10.5	.65 to .78	18.0 to 30.0	6.5 to 8.0
Buckwheat™	Tan/Earth	Grain	Clay Slip	Lt. Texture	Dark	5.5 to 7.5	8.0 to 10.0	.65 to .78	16.0 to 28.0	7.5 to 10.0
Butternut™	Tan/Earth	Smooth	None	Smooth	Light	6.0 to 8.0	8.5 to 11.0	.65 to .78	20.0 to 40.0	6.2 to 9.0
Cabernet™	Red	Grain	Clay Slip	Lt. Texture	Dark	5.0 to 7.0	7.5 to 9.5	.65 to .78	16.0 to 28.0	7.5 to 10.0
Cajun™	Red	Re-roll	Clay Slip	Rustic	Dark	5.0 to 7.0	7.5 to 9.5	.65 to .78	16.0 to 28.0	7.5 to 10.0
Coffeebean™	Red	Grain	None	Lt. Texture	Dark	5.0 to 7.0	8.0 to 9.5	.65 to .78	16.0 to 28.0	8.0 to 10.5
Colonial Grain™	Red/Orange	Grain	None	Lt. Texture	Dark	5.0 to 7.0	8.0 to 9.5	.65 to .78	16.0 to 28.0	8.5 to 11.0
Colonial Matt™	Red/Orange	Matte	None	Smooth	Dark	5.0 to 7.0	8.0 to 9.5	.65 to .78	16.0 to 28.0	8.5 to 11.0
Colonial Satin™	Red/Orange	Smooth	None	Smooth	Dark	5.0 to 7.0	8.0 to 9.5	.65 to .78	16.0 to 28.0	8.5 to 11.0
Colorado Rose™	Rose	Grain	Sand Slip	Lt. Texture	Dark	5.0 to 7.0	7.5 to 9.5	.65 to .78	12.0 to 24.0	8.0 to 10.5
Cooperstown™	Red	Grain	None	Lt. Texture	Dark	5.0 to 7.0	8.0 to 9.5	.65 to .78	16.0 to 28.0	8.0 to 10.5
Evening Shade™	Dark Red	Re-roll	Clay Slip	Rustic	Dark	5.0 to 7.0	7.5 to 9.5	.65 to .78	12.0 to 24.0	9.0 to 10.5
Greystone™	Red	Re-roll	Clay Slip	Rustic	Dark	5.0 to 7.0	8.0 to 10.0	.65 to .78	16.0 to 28.0	7.0 to 9.5
Lexington™	Red/Orange	Ripple	Clay Slip	Rustic	Dark	5.0 to 7.0	7.5 to 9.0	.65 to .78	12.0 to 24.0	8.5 to 10.0
Hickory Autumn Gold™	Red	Bark	Clay Slip	Rustic	Dark	5.0 to 7.0	7.5 to 9.5	.65 to .78	16.0 to 28.0	7.5 to 10.0
Imperial 20 Satin™	Ivory	Smooth	None	Smooth	Light	6.0 to 8.0	8.5 to 11.0	.65 to .78	20.0 to 40.0	6.0 to 9.0
Imperial 30 Grain™	Grey	Grain	None	Lt. Texture	Light	6.0 to 8.0	8.5 to 11.0	.65 to .78	20.0 to 40.0	6.0 to 9.0
Imperial 30 Satin™	Grey	Smooth	None	Smooth	Light	6.0 to 8.0	8.5 to 11.0	.65 to .78	20.0 to 40.0	6.0 to 9.0
Imperial 33 Satin™	Grey	Smooth	None	Smooth	Light	6.0 to 8.0	8.5 to 11.0	.65 to .78	20.0 to 40.0	6.0 to 9.0
Imperial 41 Grain™	Tan/Earth Tones	Grain	None	Lt. Texture	Light	5.5 to 7.5	8.0 to 10.0	.65 to .78	16.0 to 28.0	7.0 to 9.5
Imperial 50 Satin™	Grey	Smooth	None	Smooth	Light	6.8 to 8.0	8.5 to 11.0	.65 to .78	20.0 to 40.0	6.0 to 9.0
Ivory Grain™	Ivory	Grain	None	Lt. Texture	Light	6.0 to 8.0	8.5 to 11.0	.65 to .78	20.0 to 40.0	6.0 to 9.0
Larimer™	Red/Orange	Smooth	None	Smooth	Dark	5.0 to 7.0	7.5 to 9.0	.65 to .78	12.0 to 24.0	8.5 to 10.0
Mandarin™	Red/Orange	Grain	None	Lt. Texture	Dark	5.0 to 7.0	7.5 to 9.0	.65 to .78	12.0 to 24.0	8.5 to 11.0
Meadowhills™	Red/Orange	Smooth	None	Lt. Texture	Dark	5.0 to 7.0	7.5 to 9.5	.65 to .78	16.0 to 28.0	6.5 to 8.5
Mission Autumn Gold™	Brown/Gold	Grain	Clay Slip	Lt. Texture	Dark	5.0 to 7.0	7.5 to 9.5	.65 to .78	16.0 to 28.0	7.5 to 10.0
Mission Grey™	Pink/Buff	Grain	Clay Slip	Lt. Texture	Light	5.5 to 7.5	8.0 to 10.0	.65 to .78	16.0 to 28.0	7.5 to 10.0
Monterey™	Brown/Gold	Grain	Clay Slip	Lt. Texture	Dark	5.5 to 7.5	8.0 to 10.0	.65 to .78	16.0 to 28.0	7.5 to 10.0
Pearl™	Ivory	Re-roll	Clay Slip	Rustic	Light	6.0 to 8.0	8.5 to 11.0	.65 to .78	14.0 to 34.0	6.2 to 9.2
Rosepink 15 Grain™	Tan	Grain	None	Lt. Texture	Light	5.5 to 7.5	8.0 to 10.0	.65 to .78	16.0 to 28.0	7.0 to 9.5
Whitestone™	Red	Re-roll	Clay Slip	Rustic	Light	5.0 to 7.0	7.5 to 8.5	.65 to .78	16.0 to 28.0	7.5 to 10.0

Cleaning Instructions

Please visit our website for specific cleaning instructions available by brick type.

